

**FLOCK TOGETHER  
TEACHER PROJECT PACK**  
ART PROJECT DOWNLOAD



**FLOCK TOGETHER**

A Swale community arts project created by



## SCSN PROJECT – CALLING ALL SWALE SCHOOLS

'Flock Together' is a community art project teachers' Project Pack created by Animate Arts which all schools in the Swale region are invited to download and join in. The pack includes instructions on how to join the project, artist inspiration and a bird silhouette page for you to print out and help you get started.

To download the pack, go to our newly updated website from the Flock Together page:

[https://swalecep.org.uk/2023/10/02/flocktogether\\_blog/](https://swalecep.org.uk/2023/10/02/flocktogether_blog/)

Entries will be displayed in a cultural venue in Swale.

Deadline for your school's entry: **Wednesday 22 November**

**PRIMARY | SECONDARY | SEN**

## COMMON GROUND

ONLINE

*Greenham Common Peace Camps*



Schools are invited to [register their interest NOW](#) for participation in the Autumn term in a project looking at the legacy of the Greenham Common Peace Camps.

Common Ground are running a series of online CPD and information sessions to help you develop your project, offering support at every step of the way. The deadline for submissions to be included in the Common Ground archive is the 15<sup>th</sup> December 2023.

Made possible due to the Heritage Lottery Fund, so all resources and opportunities are FREE.

**Primary | SECONDARY | SEN**

## ICON

**TERM BREAK CULTURE CAMP**

SHEPPEY



**When:** 24 – 25 October 2023

**Times:** 10am – 3pm

**For Ages:** 7 – 11

**Cost:** FREE

**Where:** Queenborough School and Nursery, 21 Edward Rd. ME11 5DF

**Take Part**

**Email** [sarah@icontheatre.org.uk](mailto:sarah@icontheatre.org.uk) | <https://icontheatre.org.uk>

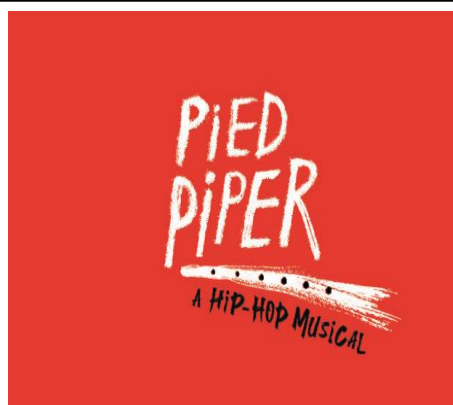
**Telephone** 01634 813179

**BONUS:** Participants will earn their Discover Arts Award

Led by the acclaimed LAsTheatre, you will journey into the world of theatre unlocking your creativity through storytelling, character crafting, soundscapes and enchanting puppetry.

**AGES 7 - 11**

**PIED PIPER OFFER from  
GULBENKIAN  
CANTERBURY**



Gulbenkian, Canterbury are offering SCSN members the opportunity to buy half price theatre tickets to this year's Christmas show which is a Battersea Arts Centre, Beatbox Academy & rODIUM Co-Production of [PIED PIPER, A HIP-HOP MUSICAL](#)

Wed 6 – Sun 10 December

Suitable for ages 6+

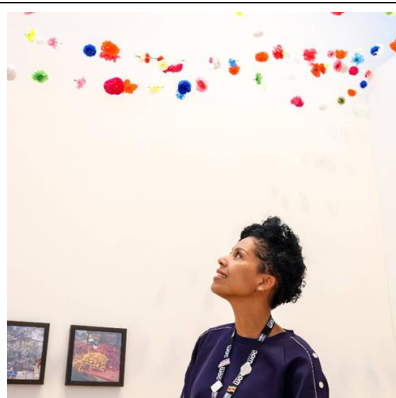
£6 tickets, 1 free adult ticket per 5 pupils.

If you would like to take up this offer for your school, please email:

[R.M.A.Lees@kent.ac.uk](mailto:R.M.A.Lees@kent.ac.uk) and quote Swale Creative Schools Network!

**PRIMARY**

**TEACHER ART PASS  
NATIONAL SCHEME**



Teacher Art Pass offers a year of art and inspiration from just £25, (including all the benefits of a National Art Pass which is £75).

<https://www.artfund.org/teacher-art-pass>

Now NSEAD members (see below) can now save an extra £5 off a Teacher Art Pass, and access 100s of discounts at museums across the UK, Art Quarterly magazine and more from just £20 a year.

NSEAD have partnered with **Art Fund** – the charity that connects museums, people and art to be able to offer this discounted offer.

**Teachers | Members of NSEAD**

**WILL TELL & THE BIG BAD BARON  
SITTINGBOURNE**



**Original theatre production for families – ages 3 to primary age**

**7th October 2023 @ 3:30 pm – 4:30 pm**

**Where:** Avenue Theatre, Sittingbourne  
Avenue of Remembrance  
Sittingbourne, Kent  
ME10 4DN

**Cost:** £8 / £6 children / £25 Family ticket

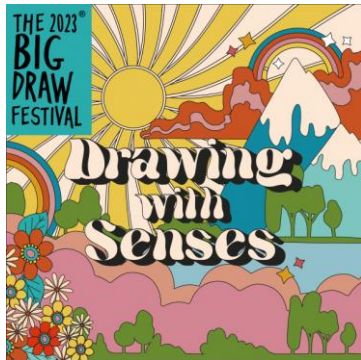
**Contact:** 01795 471140

Tickets from : [Event website](#)

**FAMILIES**

## THE BIG DRAW

ONLINE & PROJECT-BASED



The Big Draw is the world's biggest festival that promotes and celebrates drawing. Running throughout October, galleries, museums, schools and many organisations plan and deliver drawing projects for the young and not so young. This year the theme for the festival is Drawing With Senses. You can find out about the festival [HERE](#)

Swale Creative Schools Network is considering running a Big Draw project for schools in Swale in October 2024. If your school would be interested in taking part, please contact Jo on [jo.and.em.swalecsn@animateartscompany.com](mailto:jo.and.em.swalecsn@animateartscompany.com)

And if you would like a short film to share with staff to explain why drawing is so important, watch [HERE](#) and what is drawing? Watch [HERE](#)

## OOTIBOO HALLOWEEN ART COMPETITION



Arts organisation [ootiboo](#) has launched a Halloween-themed art competition for children and adults.

There are lots of prizes, including craft bundles from The Works and book bundles from Farshore and Harper Collins.

There are two themes:

- Design a monster
- Create a pumpkin character

Deadline for entries: Midnight on Halloween, 31<sup>st</sup> October  
To enter, go to the website and choose your project.

**FAMILIES**

## PLAYGROUND Creative sessions for babies



Following-up from our inspirational guest speaker, Liz Moran, Creative Director of Playground – an arts programme for early years and babies, we are sharing links to the relevant projects that may interest families in Swale schools.

General info about Playground [HERE](#)

**Sittingbourne Library** – Saturdays Info and book [HERE](#)

**Sheerness Library** – Saturdays Info and book [HERE](#)

**FAMILIES**

## Please complete! WHAT DO YOU WANT FOR NEXT YEAR'S MEETINGS?

Please take 5 minutes to complete a survey about the Swale Creative Schools Network. We want to know what you and your school want from the network, meetings and any requests for art CPD training. Now is the time to have your say!

Click here to complete survey <https://forms.gle/Anq63zTEUQ6wjdUY6>